

Rotordynamics analysis of solar hybrid microturbine for concentrated solar power

By Maulana Arifin

Rotordynamics analysis of solar hybrid microturbine for concentrated solar power

Maulana Arifin^{a, b, *}

^a Research Center for Electrical Power and Mechatronics, Indonesian Institute of Sciences
Jl. Gsitu No. 154D, Bandung, 40135, Indonesia

^b Institute of Thermal Turbomachinery and Machinery Laboratory, University of Stuttgart
Pfaffenwaldring 6, 70569 Stuttgart, Germany

Received 14 January 2016; accepted 15 October 2016; Published online 12 January 2017 (7pt)

Abstract

Microturbine based on a parabolic dish solar concentrator runs at high speed and has large amplitude of subsynchronous turbo-shaft motion due to the direct normal irradiance (DNI) fluctuation in daily operation. A detailed rotordynamics model coupled to a full fluid film radial or journal bearing model needs to be addressed for increasing performance and to ensure safe operating conditions. The present paper delivers predictions of rotor tip displacement in the microturbine rotor assembly supported by a journal bearing under non-linear vibrations. The rotor assembly operates at 72 krpm on the design speed and delivers a 40 kW power output with the turbine inlet temperature is about 950°C. The turbo-shaft oil temperature range is between 50°C to 90°C. The vibrations on the tip radial compressor and turbine were presented and evaluated in the commercial software GT-Suite environment. The microturbine rotors assembly model shows good results in predicting maximum tip displacement at the rotors with respect to the frequency and time domain.

Keywords: microturbines rotor tip displacement; parabolic dish solar concentrator; rotordynamics model; journal bearing; non-linear vibration.

1. Introduction

Concentrating solar power (CSP) is presently primary technology for generating power electricity from solar energy after Photovoltaics (PV). Commercial CSP technology can be commonly divided into the following four main types, that is, linear fresnel reflector, parabolic trough collector, central receiver, and parabolic dish [1]. CSP utilizes mirrors set to focus the direct sunlight onto a solar receiver to increase the temperature of a working fluid. The working fluid then transfers its energy to mechanical energy in the thermal engine to produce electrical power.

In many studies, it is recognized that parabolic troughs employ reflective surfaces or mirror with a parabolic-shaped cross-section, which delivers a linear concentration on the receiver tube where a heat transfer fluid temperature can be increased up to 390°C. The parabolic troughs concentration ratio is typically below 80 [2]. Comparable to parabolic troughs, linear Fresnel reflector (LFR) systems can

heat the working fluid up to 450°C and are generally used in power plants of a few megawatts. Meanwhile, central solar towers and parabolic dish solar concentrators have a higher concentration ratio than a parabolic troughs (typically more than 1000). Both of them have the potential to raise the temperature of the working fluid to 800°C, which is necessary for certain types of thermal engines such as gas turbines. However, the solar towers are not applicable for small scale power generation applications (< 50 kW). Therefore, a parabolic dish solar concentrator becomes the most suitable for such applications [3].

In the parabolic dish solar concentrator system, microturbine is a crucial component in order to increase its power and performance. The microturbine consists of turbomachinery components such as radial compressors and turbines [4]. Due to the lightweight and small rotor dimensions, microturbine runs at high rotor speeds in various operating conditions. Typical rotor speed is around 50000 to 150000 rpm, which delivers mechanical or structural stability issues. Poor design of the microturbine components could be brought to low performance and even failure in the assembly system. To overcome these critical issues, a rotor-

* Corresponding Author. Tel: +49 711 685-63516
E-mail address: maulanaarifin@ipi.go.id

dynamic analysis in compressors and turbines can be very beneficial for ensuring safety and increasing the performance of the system [5]. The non-linear vibration on the journal or thrust bearing and turboshaft of turbocharger compressor and turbine have been extensively studied in the open literature [6][7][8][9]. However, rotordynamics analysis on the microturbine based on CSP application did not obtain much attention in the open literature and nearly a few works have been presented [5]. The present study highlights a non-linear rotordynamics analysis at design and off-design on the rotor speed of microturbine for CSP applications. This could be useful for readers in determining a suitable rotor design, especially for high-speed microturbine applications. This paper also aims to gain more insights into the effect of journal bearing clearance at the turbo-shaft of microturbine.

II. Materials and Methods

In the present study, the turbomachinery components are using cast aluminum material for the radial compressor and Inconel-718 for the radial turbine. Table 1 shows performance data for both the compressor and the turbine from [10]. The power output of the system is about 40 kW at the design point with the turbine inlet temperature (TIT) of 950°C. The weights of the rotors are 100 and 150 grams. For the mechanical supports, the turbo-shaft uses a journal bearing with inner and outer bushing. The primary function of a journal bearing is to maintain the wheels or rotors balance (rotordynamics stability) at all operating conditions of microturbine. Due to an interaction between joints

and force elements, the rotor assembly modeling is based on the multi-body dynamics structure [11]. The turbo-shaft rotor is defined as an assembly of rigid and flexible bodies. Therefore, the existing hydrodynamic bearings restrict the global motion in an axial and radial direction (see Figure 1). A sleeve bearing is fit into radial compressor journal bearing end and seal installation from the lubricant oil 5W30-62. The oil temperature at the operating condition is between 50°C to 90°C.

The Reynolds lubrication equation is utilized to calculate the flow dynamics and bearing forces in the oil film journal bearing [12]. The numbers for oil film at journal bearing are typically laminar between 100 and 200. The Reynolds lubrication equation can be written as:

$$-\frac{\partial}{\partial x} \left(h^3 \frac{\partial p}{\partial x} \right) + \frac{\partial}{\partial z} \left(h^3 \frac{\partial p}{\partial z} \right) = 6\eta \left[(U_j + U_b) \frac{\partial h}{\partial x} + 2 \frac{\partial h}{\partial t} \right] \quad (1)$$

where U_j is the journal velocity; U_b is the bearing ring velocity; h is the oil film thickness; x is the circumferential direction ($x = R$); z is the axial direction. Based on Nguyen-Schäfer [12], the non-linear bearing force is defined as:

$$F_1 = +F_r \sin \gamma + F_t \cos \gamma \equiv f_1(\varepsilon, \dot{\varepsilon}, \gamma, \dot{\gamma}, \Omega) \quad (2)$$

$$F_2 = -F_r \cos \gamma + F_t \sin \gamma \equiv f_2(\varepsilon, \dot{\varepsilon}, \gamma, \dot{\gamma}, \Omega) \quad (3)$$

where F_1 and F_2 are pressure force components at 7 vertical coordinates; F_r and F_t are the bearing forces in the rotating coordinate system (r, t); Ω is the angular rotor velocity or rotor speed; ε and $\dot{\varepsilon}$ are the journal bearing relative eccentricity and the time change rate of the journal relative eccentricity; γ is the whirl velocity of the journal bearing. The equation above is utilized to calculate the transient non-linear bearing

Table 1.
Table caption data specification of the radial compressor and radial turbine at the design point [10]

Parameter	Unit	Compressor	Turbine
Mass flow rate (\dot{m})	[kg/s]	0.34	0.34
Rotor speed (Ω)	[rpm]	72373	72373
Power (P)	[kW]	40	80
Efficiency (η_{is})	[-]	0.78	0.84
Pressure Ratio (PR)	[-]	2.8	2.6
Turbine Inlet Temperature	[K]	-	1173
Number of blade rotor (Zr)	[-]	8/8	16
Number of blade vane (Zv)	[-]	-	17
Diameter rotor	[mm]	105	128
Axial length	[mm]	41	42
High of rotor outlet (B2)	[mm]	6.8	25
Beta angle (Beta2B)	[°]	-40	-

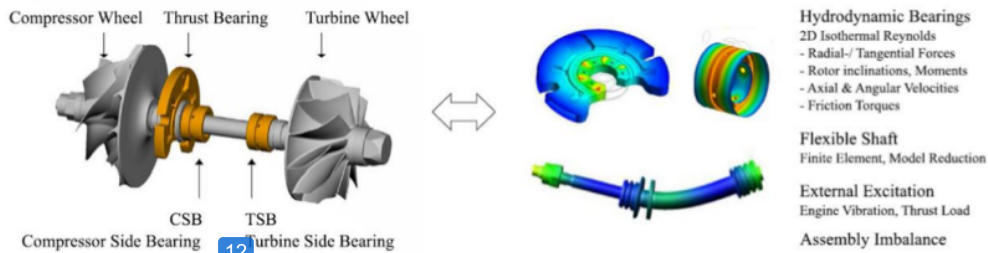


Figure 1. Radial compressor and turbine assembly modeling with turbo-shaft and bearing [11]

Figure 4 presents the influence of rotor speed on the tip displacements at the compressor and turbine with respect to the time domain. The tip deflection or displacements on the rotor is in the Y-direction with the transient response. Five different speeds are considered, that is, 52 krpm, 57 krpm, 65 krpm, 72 krpm (design speed), and 79 krpm. These represent 0.7 to 1.1 of the design speed. For the rotor speed of 52 krpm and 57 krpm (Figures 4A and 4B), the tip deflection characteristics are similar. It can be seen that the rotor tip deflection or displacement is unstable at the beginning. The vibration starts at the

initial position and grows exponentially with time, hence the vibration becomes unstable. The behavior of vibration becomes stable after several times due to the decrease of amplitude of the vibration in a short time (see Figure 5). For instance, the maximum tip displacement at the stable region for both compressor and turbine are below 0.02 mm. Figures 4B, 4C, and 4D reveal that there has been a gradual increase in the maximum tip displacement for compressor and turbine. The vibration characteristics of the rotors are similar from rotor speed 65 krpm to 79 krpm (Figures 4C and 4D). The

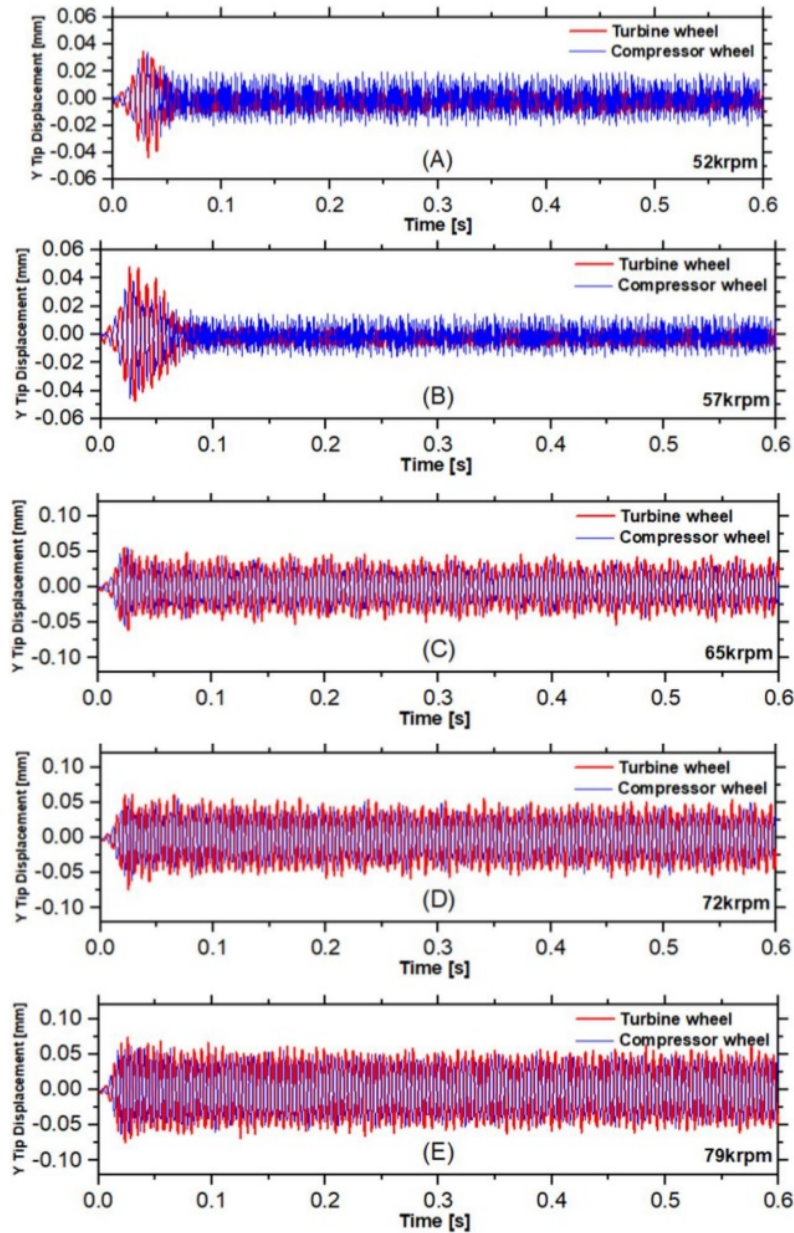


Figure 4. Prediction of the maximum tip displacement for compressor and turbine wheel at various turbo speed: (a) 52 krpm; (b) 57 krpm; (c) 65 krpm; (d) 72 krpm; (e) 79 krpm

maximum tip displacement is between 0.05 mm to 0.07 mm, which is still at the safe operating conditions [15].

Figure 5 depicts a waterfall diagram of predicted non-linear turbo-shaft response at compressor and turbine. The waterfall diagram in Figures 5A and 5B also exposes the rotor mode shapes at a turbo-shaft from 52 krpm to 79 krpm. In most cases, the journal bearing system critical speeds are recognized on the crossing of the synchronous line 1X ($\omega = \Omega$) with each of the natural frequencies. For safety reasons, the design of journal bearing should avoid crossing the natural frequencies line. Figures 5A and 5B show that the unbalance amplitude at synchronous line 1X is relatively small, which means that the journal bearing or turbo-shaft of compressor and turbine wheel are running safely. Meanwhile, the frequency of the journal bearing is much higher than the quasi-resonance amplitude of the compressor and turbine wheel. The maximum amplitude is about 0.030 and

1300 Hz for the maximum frequency. Actually, the characteristic resonance of linear vibration does not present in non-linear rotordynamics simulation [15]. Therefore, only the maximum cycle of the compressor and turbine wheel response is developed at each turbo speed.

15

B. Effect of the journal bearing clearance

The influence of the oil journal bearing clearance is discussed in this section. The turbo-shaft operates at the design speed of 72 krpm. Five difference clearances are considered, that is 0.015 mm, 0.020 mm, 0.025 mm, 0.030 mm, and 0.035 mm. Figure 6 displays the comparison of maximum tip displacement for both compressor and turbine wheel. Similar to the previous section, the tip displacement of the rotor response is obtained by means of superimposing the harmonic unbalance vibration on the subsynchronous frequency

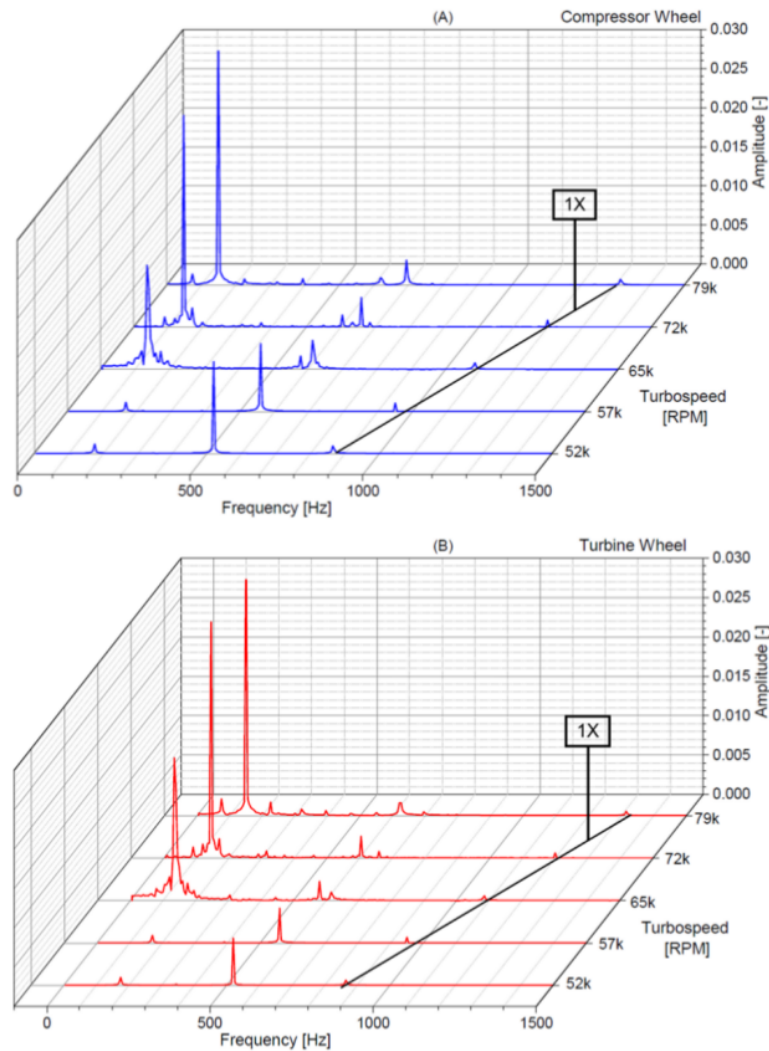


Figure 5. The non-linear rotordynamics prediction of the maximum amplitude for compressor and turbine wheel at various turbo speed in the frequency domain

1 components of the inner and outer oil journal bearing at the rotor. For the oil journal bearing clearance of 0.015 mm, the tip displacement increases and becomes unbalanced at the beginning

time step simulation. The maximum displacement is about 0.04 mm (see Figure 7A). Furthermore, Figure 6B shows that the vibration of the rotor response has sidebands displacement at the initial time step. In

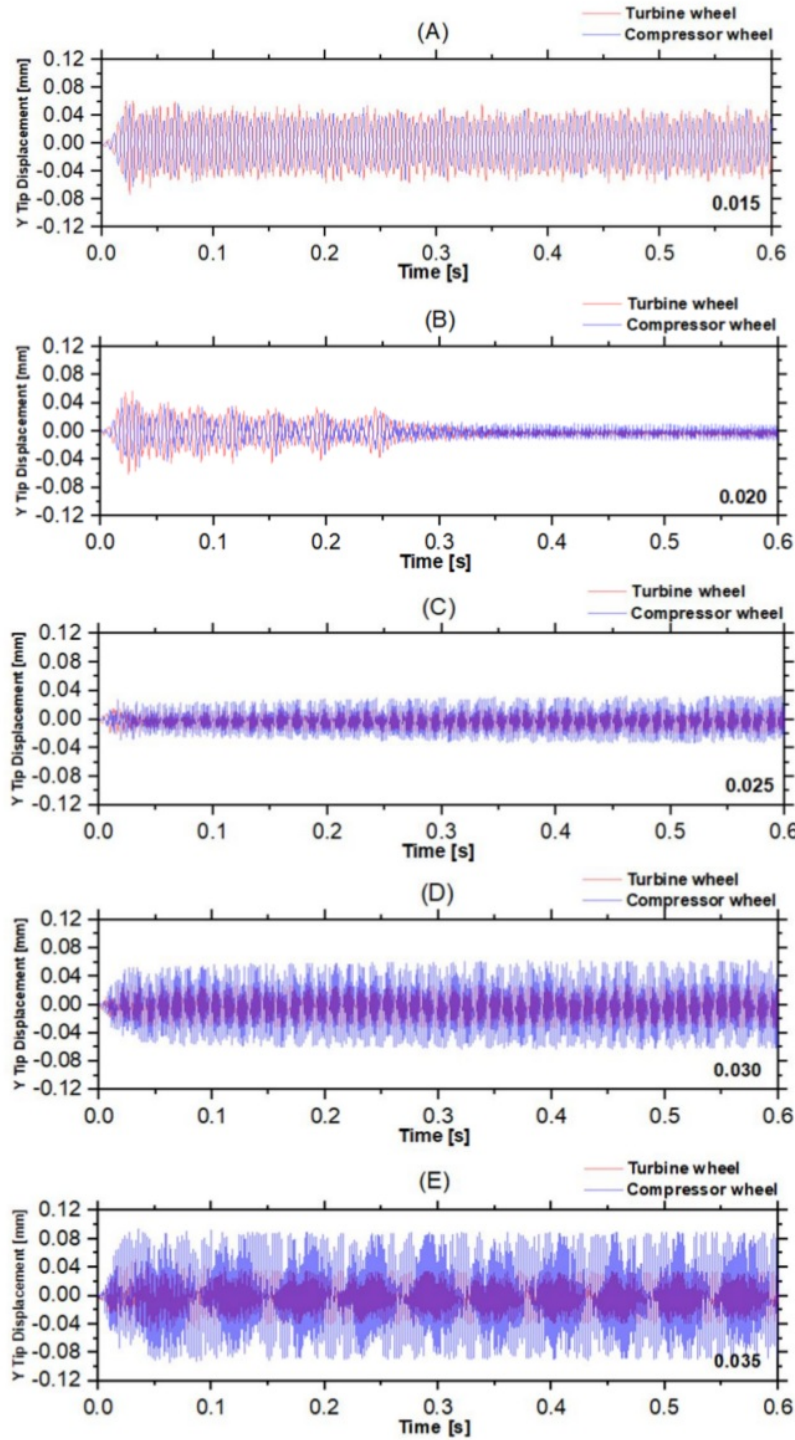


Figure 6. Comparison of maximum tip displacement at different journal bearing clearance for compressor and turbine wheel: (a) 0.015; (b) 0.020; (c) 0.025; (d) 0.030; (e) 0.035

the end, the vibration response is diminished with the minimum displacement. However, the tip displacement trend is increased at the more significant journal bearing clearance, as shown in Figures 6C, 6D, and 6E. At the 0.035 mm clearance, the maximum displacement is about 0.09 mm. To sum up, from Figure 6 it is known that the ideal clearances for turbo-shaft microturbine is between 0.015 mm and 0.020 mm.

IV. Conclusion

The rotordynamics characteristics of turbo-shaft microturbine based on parabolic dish solar concentrator were investigated under non-linear vibrations in the time and frequency domains. The model can predict a maximum tip displacement for compressor and turbine wheel at various speed. Five different turbo speed values and journal bearing oil clearance were considered in the evaluations. This study used a Fast Fourier Transform (FFT) to represent the vibrations response to the rotor or wheel. This study shows that the maximum tip displacement occurs at a higher turbo speed and larger bearing oil clearance. The results show that in the design turbo speed (72 krpm), the maximum tip displacement is still in reasonable conditions.

Acknowledgement

The authors would like to acknowledge the Ministry of Finance Republic of Indonesia for the financial support through Indonesia Endowment Fund for Education (LPDP), Insentif Riset Sistem Inovasi Nasional (INSINAS) Kemenristek, and the Institute of Thermal Turbomachinery and Machinery Laboratory (ITSM) at the University of Stuttgart for providing the computational support.

Declarations

Author contribution

M. Arifin as the contributor of this paper. Author read and approved the final paper.

Funding statement

This research did not receive any specific grant from funding agencies in the public, commercial, or not-for-profit sectors.

Conflict of interest

The authors declare no conflict of interest.

Additional information

No additional information is available for this paper.

References

- [1] M.-D. J. M. Guerrero-Lemus R., *Concentrated Solar Power*. In: *Renewable Energies and CO₂*, Vol. 3. London: Springer-Verlag, 2013.
- [2] W. S. Keith Lovegrove, *Concentrating Solar Power Technology, Principles, Developments and Applications*. Woodhead Publishing, 2012.
- [3] M. Arifin, A. Rajani, Kusnadi, and T. D. Atmaja, "Modeling and Performance Analysis of a Parallel Solar Hybrid Micro Gas Turbine," *Proceeding - 2019 Int. Conf. Sustain. Energy Eng. Appl. Innov. Technol. Towar. Energy Resilience, ICSEEA 2019*, pp. 62–68, 2019.
- [4] M. Arifin, K. Kusnadi, and R. I. Pramana, "Prediction performance map of radial compressor for system simulation," *Proc. - 6th Int. Conf. Sustain. Energy Eng. Appl. ICSEEA 2018*, pp. 51–56, 2019.
- [5] A. I. S. A. Arroyo, M. McLorn, M. Fabian, M. White, "Rotor-Dynamics of Different Shaft Configurations for a 6 kW Micro Gas Turbine for Concentrated Solar Power," *ASME Turbo Expo 2016 Turbomach. Tech. Conf. Expo.*, pp. 1–10, 2016.
- [6] I. Chatzisavvas, "Efficient Thermohydrodynamic Radial and Thrust Bearing Modeling for Transient Rotor Simulations," *PhD Thesis, Darmstadt, Tech. Univ.*, 2018.
- [7] M. I. Friswell, *Dynamics of Rotating Machines*. Cambridge University Press, 2015.
- [8] P. Koutsovasilis, "Mode shape degeneration in linear rotor dynamics for turbocharger systems," *Arch. Appl. Mech.*, vol. 87, no. 3, pp. 575–592, 2017.
- [9] I. Chatzisavvas, "Efficient Thrust Bearing Model for High-Speed Rotordynamic Applications," in *Proceedings of the 9th IFToMM International Conference on Rotor Dynamics*, 2015.
- [10] D. V. Maulana Arifin, Markus Schatz, "Design and Optimization of Turbomachinery Components for Parabolic Dish Solar Hybrid Micro Gas Turbine," *Proceeding ASME Turbo Expo*, pp. 1–11, 2020.
- [11] P. Koutsovasilis, "Automotive turbocharger rotordynamics: Interaction of thrust and radial bearings in shaft motion simulation," *J. Sound Vib.*, vol. 455, pp. 413–429, 2019.
- [12] H. Nguyen-Schäfer, *Rotordynamics of Automotive Turbochargers*, vol. 2. Stuttgart: Springer International Publishing AG Switzerland, 2015.
- [13] Gamma Technologies, "GT-Suite, Flow and Mechanical Theory Manual," 2019.
- [14] C. U. Waldherr and D. M. Vogt, "An Extension of the Classical Subset of Nominal Modes Method for the Model Order Reduction of Gyroscopic Systems," *J. Eng. Gas Turbines Power*, vol. 141, no. 5, pp. 1–8, 2019.
- [15] W. J. Chen, "Rotordynamics and bearing design of turbochargers," *Mech. Syst. Signal Process.*, vol. 29, pp. 77–89, 2012.

Rotordynamics analysis of solar hybrid microturbine for concentrated solar power

ORIGINALITY REPORT

22%

SIMILARITY INDEX

PRIMARY SOURCES

- 1 link.springer.com 163 words — 6%
Internet
- 2 Maulana Arifin, Ahmad Rajani, Kusnadi, Tinton Dwi Atmaja. "Modeling and Performance Analysis of a Parallel Solar Hybrid Micro Gas Turbine", 2019 International Conference on Sustainable Energy Engineering and Application (ICSEEA), 2019 69 words — 3%
Crossref
- 3 Mostafa Nazih. "Safety assessment of high voltage substation earthing systems with synthetic geotextile membrane", Journal of Mechatronics, Electrical Power, and Vehicular Technology, 2021 58 words — 2%
Crossref
- 4 openaccess.city.ac.uk 49 words — 2%
Internet
- 5 Hung Nguyen-Schäfer. "Rotordynamics of Automotive Turbochargers", Springer Nature, 2012 45 words — 2%
Crossref
- 6 Panagiotis Koutsovasilis. "Automotive turbocharger rotordynamics: Interaction of thrust and radial bearings in shaft motion simulation", Journal of Sound and Vibration, 2019 29 words — 1%
Crossref
- 7 Hung Nguyen-Schäfer. "Rotordynamics of Automotive Turbochargers", Springer Science and Business Media LLC, 2015 27 words — 1%

-
- 8 Proceedings of ISES World Congress 2007 (Vol I – Vol V), 2009. 22 words — 1%
Crossref
-
- 9 Budi Azhari, Fransisco Danang Wijaya. "Quasi-flat linear PM generator optimization using simulated annealing algorithm for WEC in Indonesia", Journal of Mechatronics, Electrical Power, and Vehicular Technology, 2019 22 words — 1%
Crossref
-
- 10 Nguyen-Schäfer, Hung. "Bearing Dynamics of Turbochargers", Springer Tracts in Mechanical Engineering, 2015. 17 words — 1%
Crossref
-
- 11 Yuan Yin, Yun-Xia Chen, Le Liu. "Lifetime prediction for the subsurface crack propagation using three-dimensional dynamic FEA model", Mechanical Systems and Signal Processing, 2017 15 words — 1%
Crossref
-
- 12 George W. Hosang. "Experimental and Computed Performance Characteristics of High Speed Silicon Nitride Hybrid Ball Bearings", Volume 5: Manufacturing Materials and Metallurgy; Ceramics; Structures and Dynamics; Controls, Diagnostics and Instrumentation; General, 1990 12 words — < 1%
Crossref
-
- 13 www.mevjournal.com 11 words — < 1%
Internet
-
- 14 www.etc11.eu 10 words — < 1%
Internet
-
- 15 Dimitrios A. Bompos, Pantelis G. Nikolakopoulos. "Rotordynamic Analysis of a Shaft Using Magnetorheological and Nanomagnetorheological Fluid Journal Bearings", Tribology Transactions, 2016 9 words — < 1%
Crossref

Luis San Andrés, Juan Carlos Rivadeneira, Murali Chinta, Kostandin Gjika, Gerry LaRue. "Nonlinear Rotordynamics of Automotive Turbochargers: Predictions and Comparisons to Test Data", Volume 4: Turbo Expo 2005, 2005

Crossref

9 words — < 1%

EXCLUDE QUOTES OFF
EXCLUDE ON
BIBLIOGRAPHY

EXCLUDE MATCHES OFF